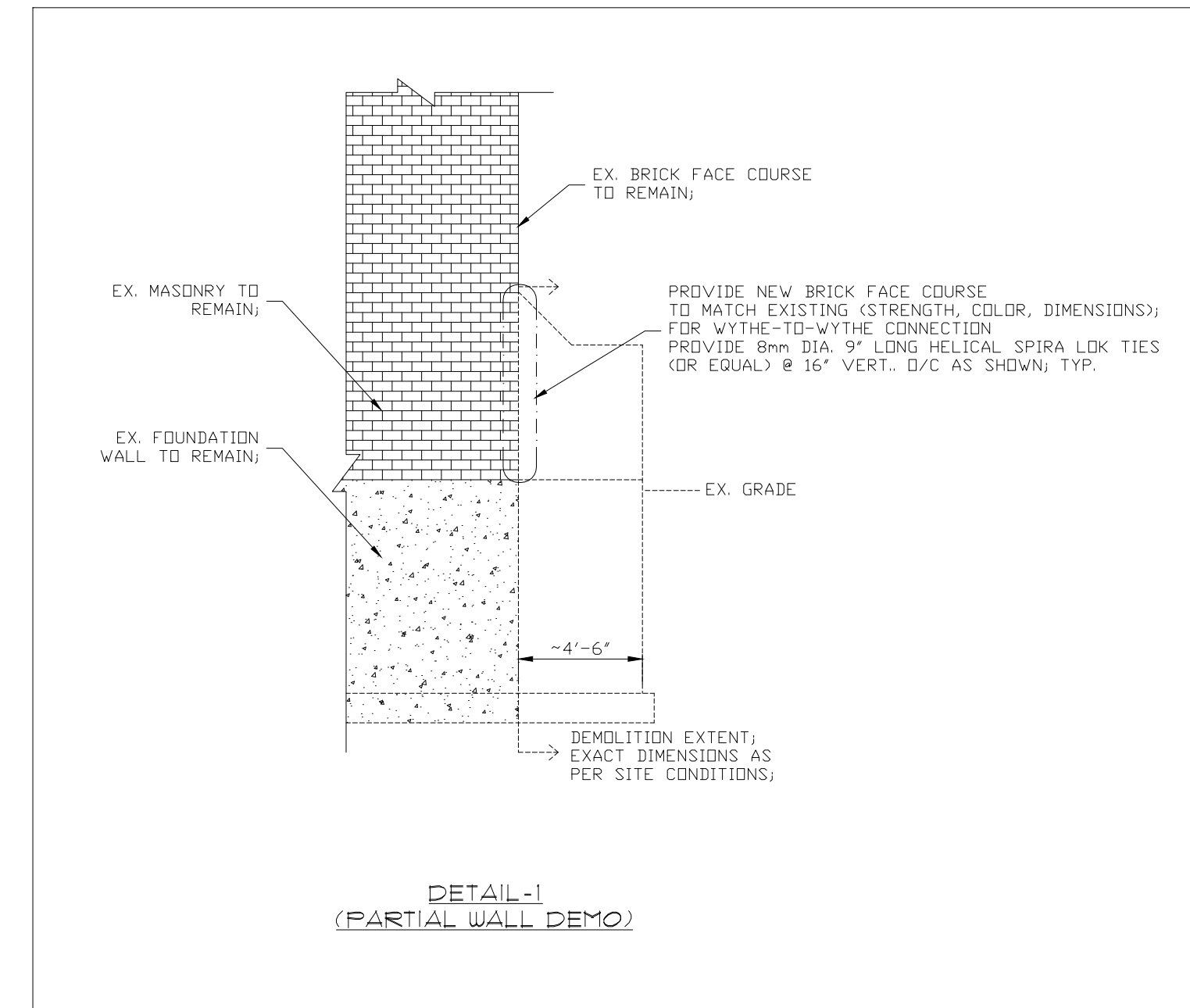
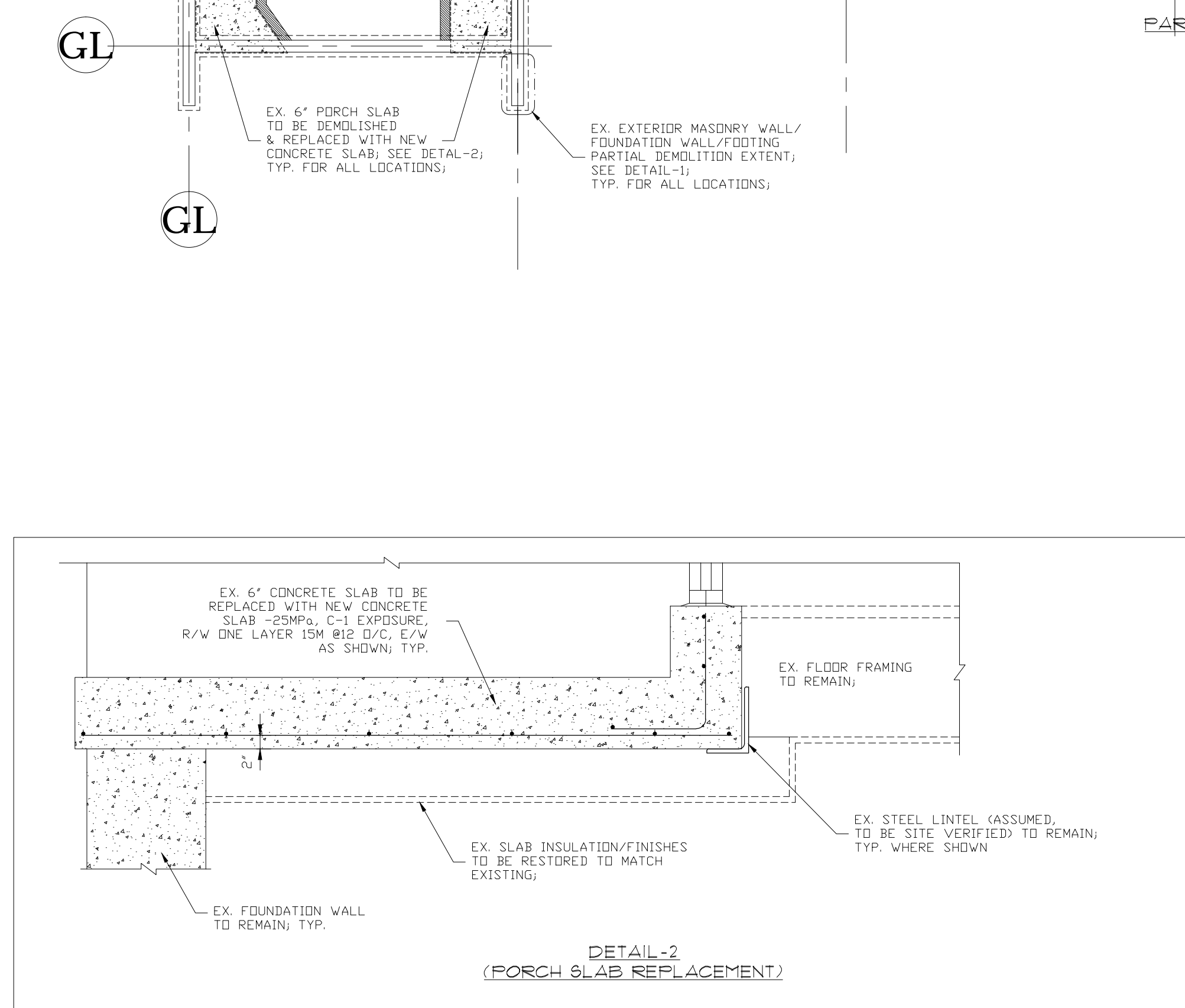
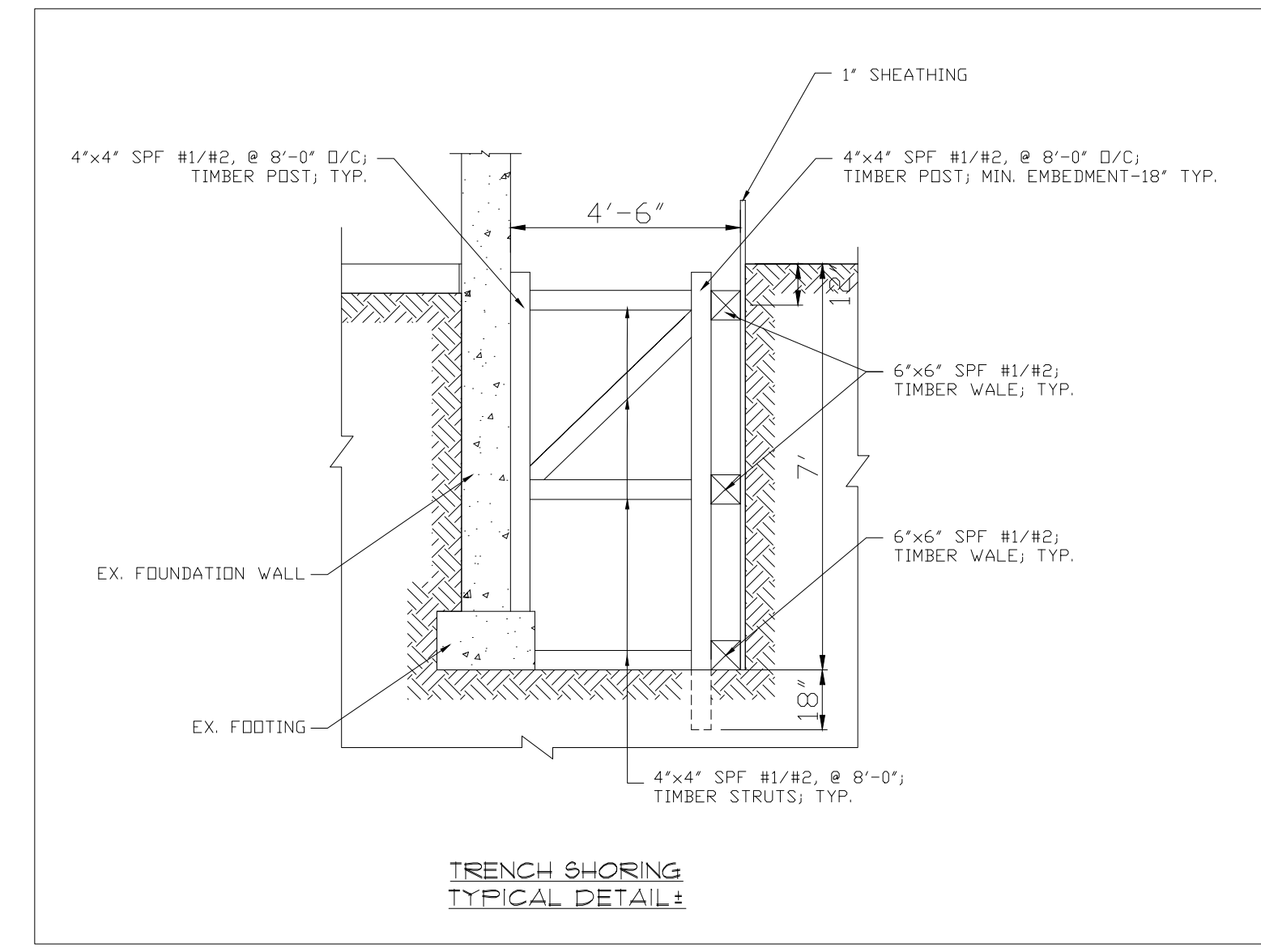
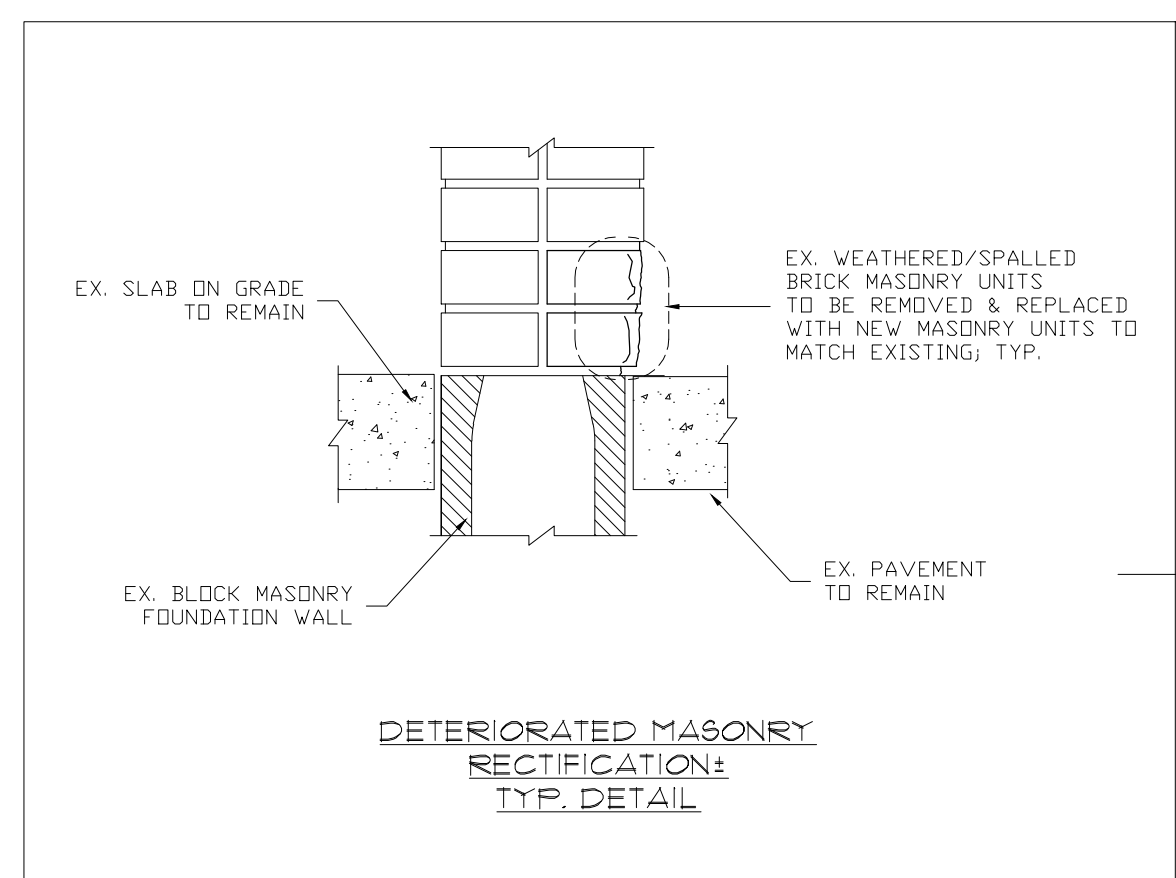
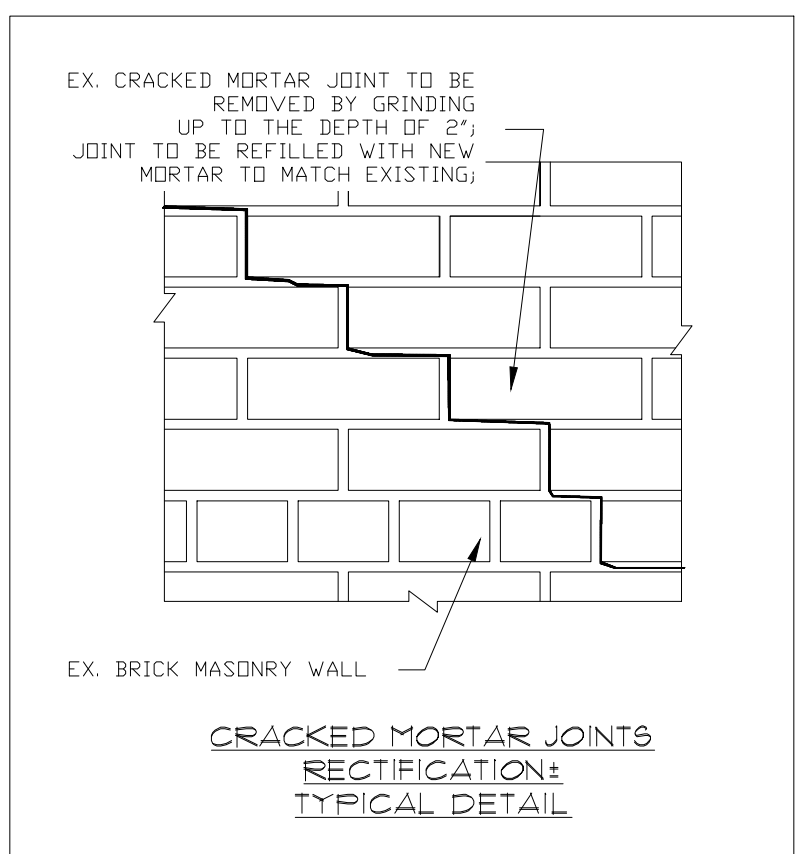
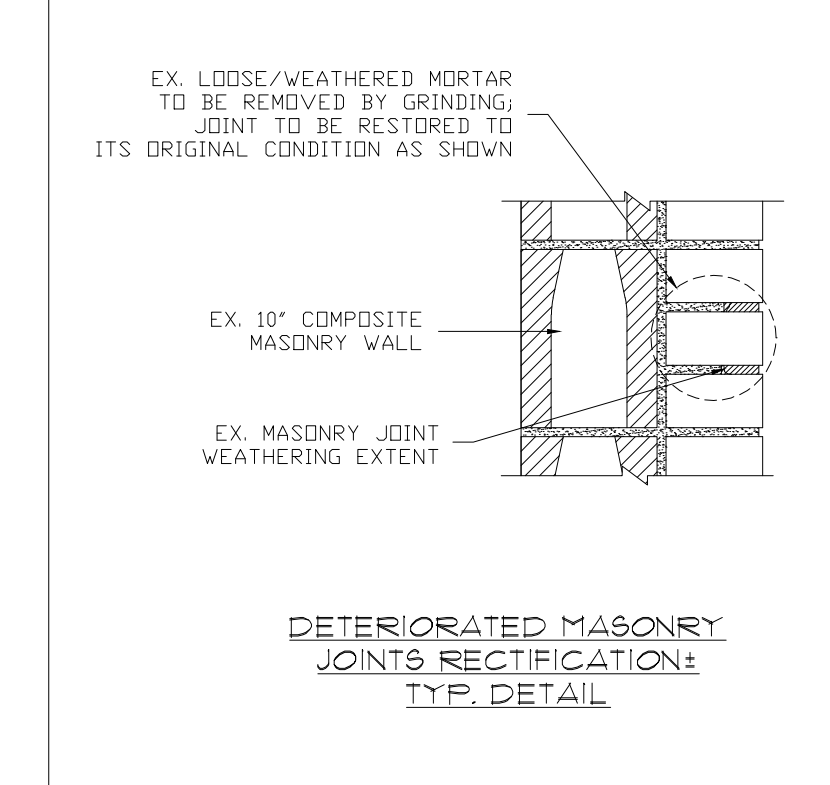
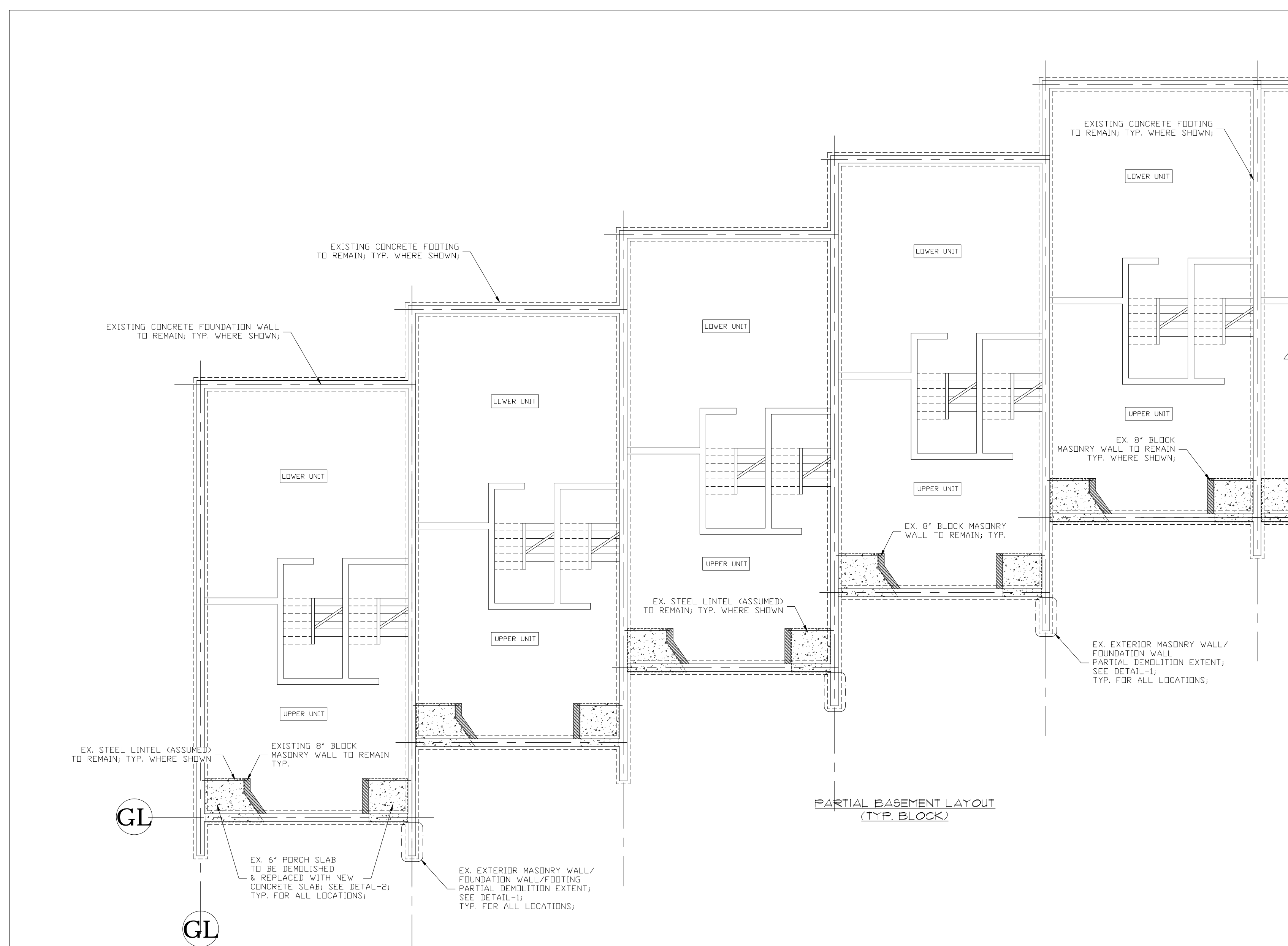


METRIC PRINTING COLOR SETTINGS: s=0.152, r=0.305, g=0.458, b=0.610, c=0.763, m=0.916, y=0.100, k=0.100, l=0.100
 IMPERIAL PRINTING COLOR SETTINGS: s=0.006, r=0.012, g=0.025, b=0.040, c=0.050, m=0.075, y=0.100, k=0.100, l=0.100



THIS DRAWING, AS AN INSTRUMENT OF SERVICE, IS PROVIDED BY AND IS THE PROPERTY OF LEONARD KALISHENKO & ASSOCIATES.

THE CONTRACTOR MUST VERIFY AND ACCEPT RESPONSIBILITY FOR ALL DIMENSIONS AND CONDITIONS ON SITE AND MUST NOTIFY LEONARD KALISHENKO AND ASSOCIATES OF ANY VARIATIONS FROM THE SUPPLIED INFORMATION.

THIS DRAWING IS NOT TO BE SCALED.

THE ENGINEER IS NOT RESPONSIBLE FOR THE ACCURACY OF SURVEY, ARCHITECTURAL, MECHANICAL, ELECTRICAL, ETC. INFORMATION SHOWN ON THIS DRAWING. REFER TO THE APPROPRIATE CONSULTANT'S DRAWINGS BEFORE PROCEEDING WITH THE WORK.

CONSTRUCTION MUST CONFORM TO ALL APPLICABLE CODES AND REQUIREMENTS OF AUTHORITIES HAVING JURISDICTION.

THE CONTRACTOR WORKING FROM DRAWINGS NOT SPECIFICALLY MARKED "FOR CONSTRUCTION" MUST ASSUME FULL RESPONSIBILITY AND BEAR COSTS FOR ANY CORRECTIONS OR DAMAGES RESULTING FROM HIS WORK.

NO.	DATE	ISSUED	BY
1	JUNE 19, 2018	ISSUED FOR COORDINATION	L.K.
2	SEP 2, 2018	ISSUED FOR CLIENT	L.K.

NO.	DATE	REVISION	BY
-----	------	----------	----



LEONARD KALISHENKO & ASSOCIATES LIMITED
 STRUCTURAL ENGINEERS

5050 DUFFERIN STR., #240, TORONTO, ONTARIO, M3H 5T5 TEL: (416) 665-7165 FAX: (416) 665-4259

Project:
FACADE MODIFICATION
 435 MARKHAM RD.
 SCARBOROUGH, ONTARIO

Drawing Title:
PARTIAL BASEMENT LAYOUT: DETAILS:

Drawn by:	S.V.	Date:	JUNE 18 2018
Checked by:	L.K.	Scale:	N.T.S.
Project Nr.	18-3111	Drawing Nr.	S-1

CAD FILE: \DWG\
 LAST UPDATED:

ARCH: 10" SIZE 36"x24"