

WALL ELEVATION VIEW

SCALE: 1:50

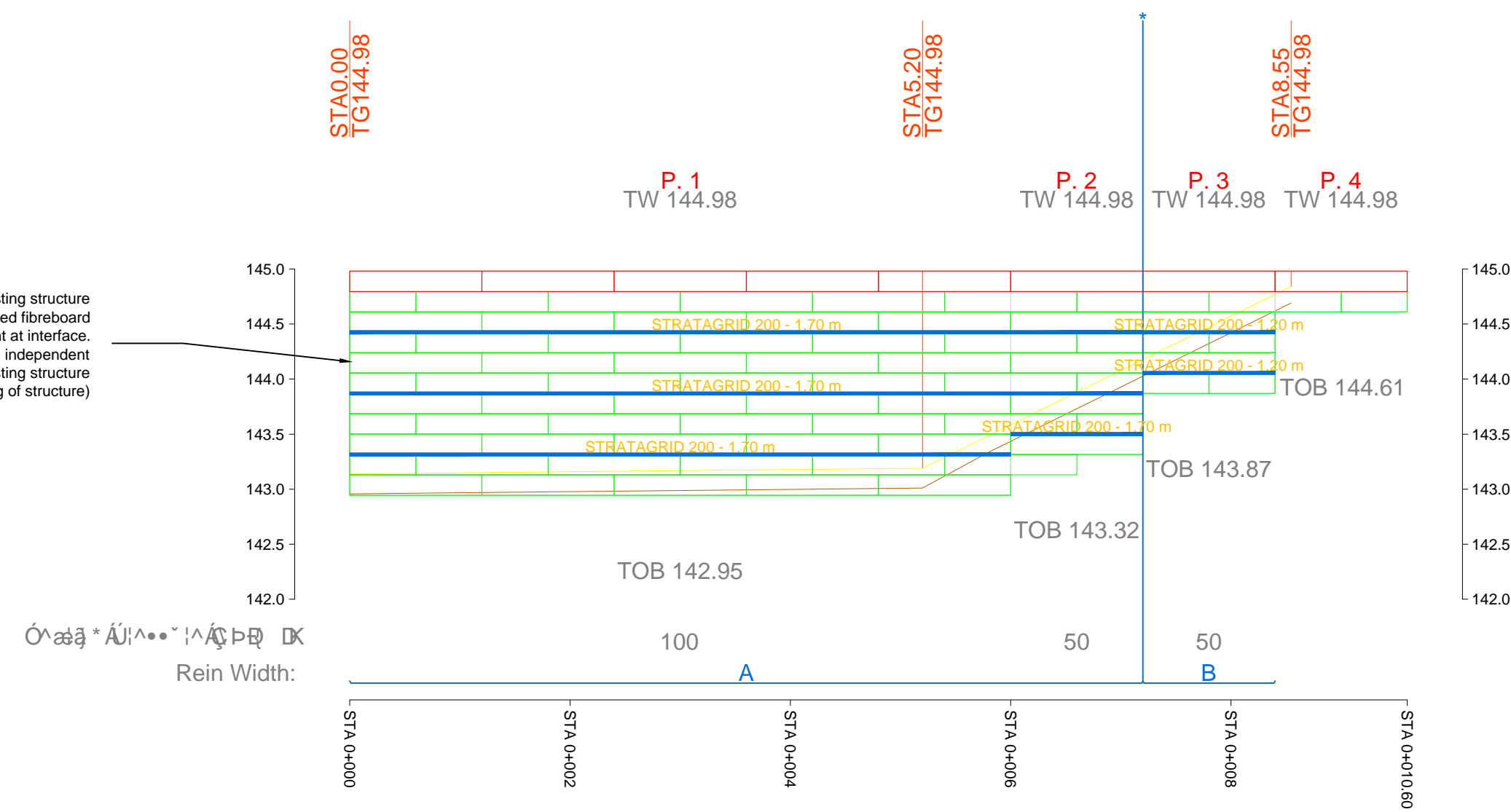


Table with 2 columns: Column No. and Geogroups. Includes data for Column Geometry and Geogroups (A, B).

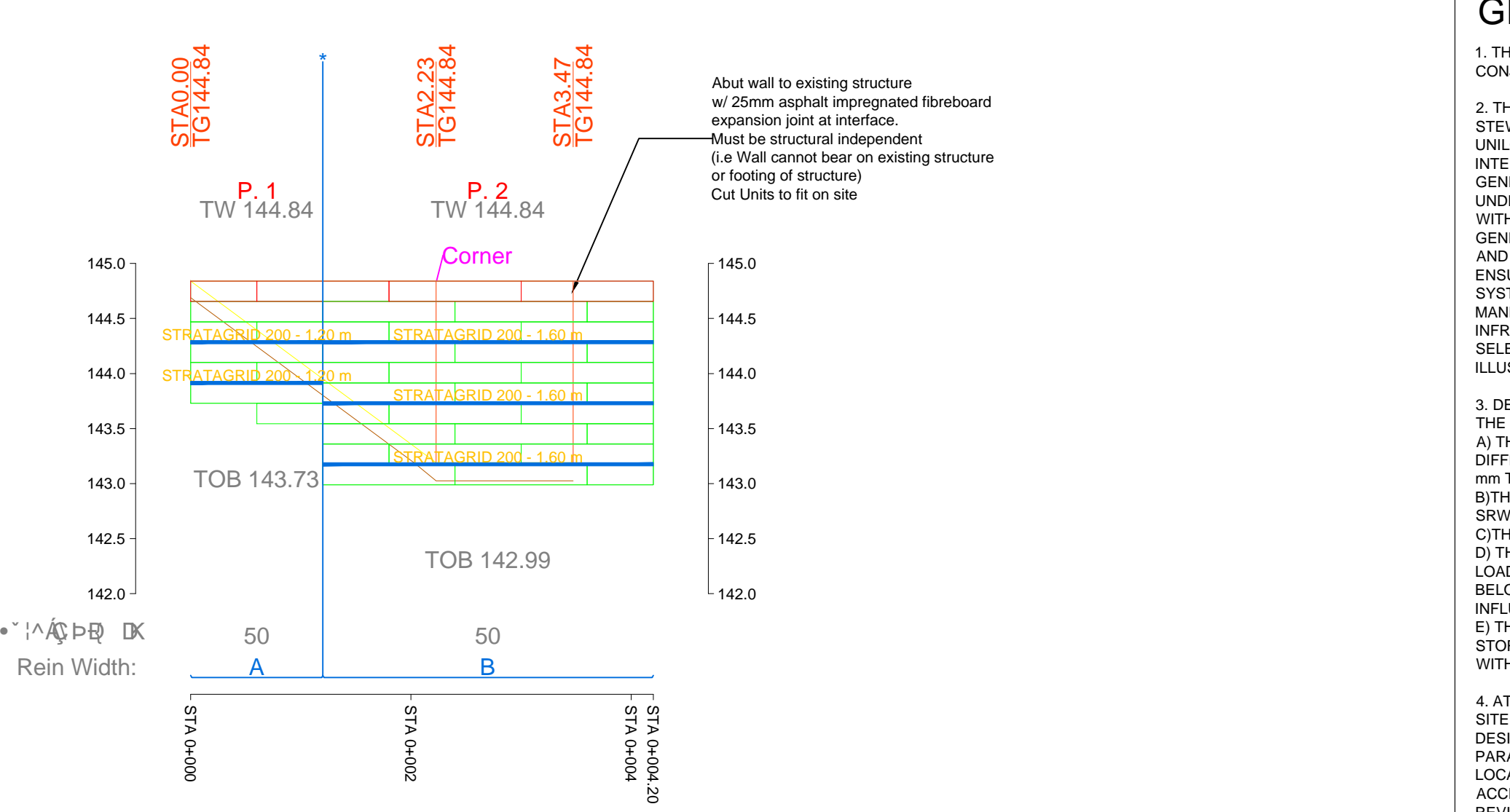


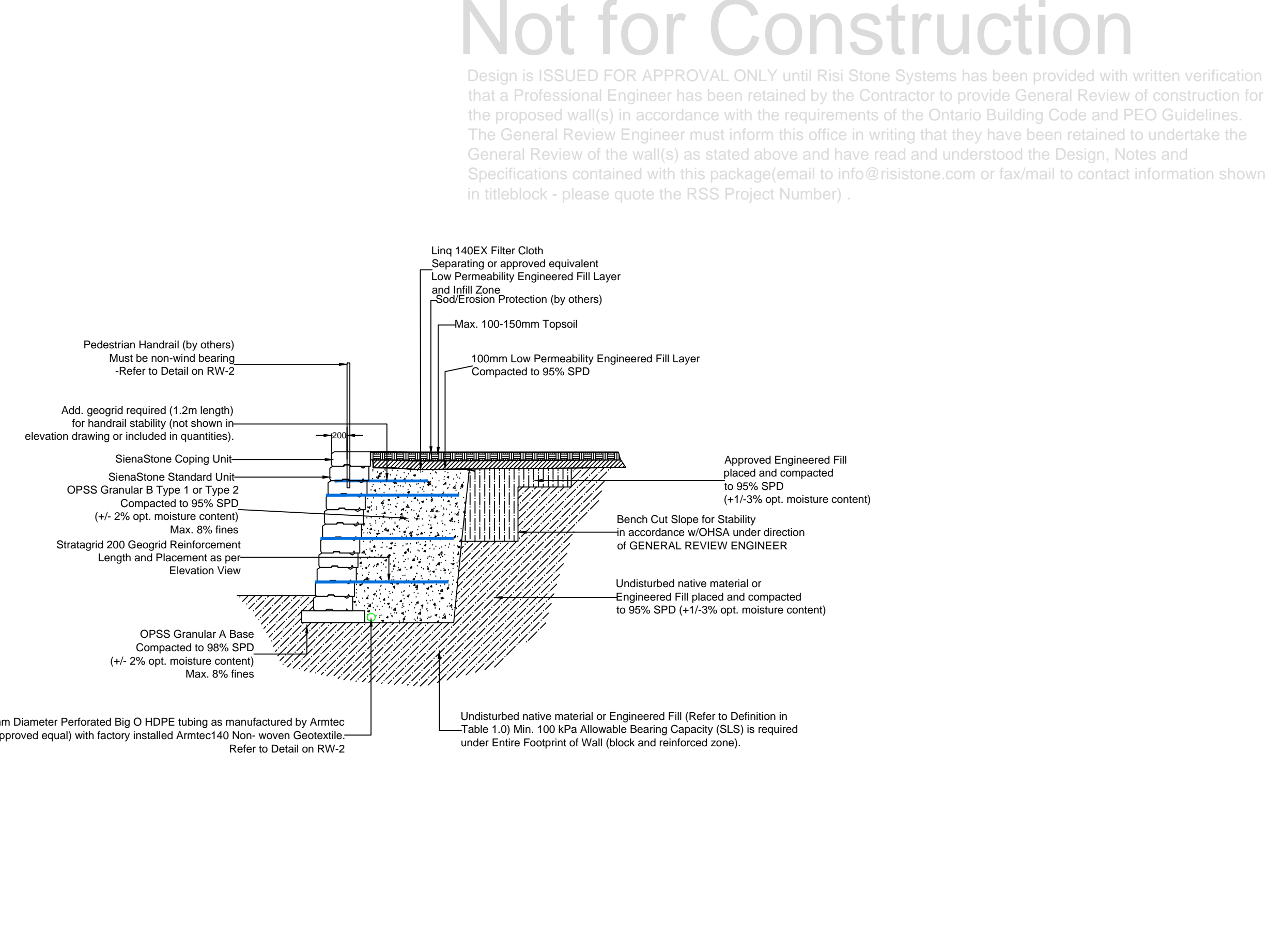
Table with 2 columns: Column No. and Geogroups. Includes data for Column Geometry and Geogroups (A, B).

GENERAL NOTES

- 1. THE INFORMATION PROVIDED ON THIS SHEET MUST BE USED IN CONJUNCTION WITH THE ATTACHED SPECIFICATIONS.
2. THIS DESIGN IS BASED ON INFORMATION PROVIDED IN THE DRAWING BY STEWART, C. MELROY & ASSOCIATES INC.
3. DESIGN ASSUMPTIONS:
4. AT THIS STAGE IN THE DESIGN, RISI STONE SYSTEMS HAS NOT RECEIVED SITE SPECIFIC GEOTECHNICAL INFORMATION...
5. THIS DESIGN MUST BE CHECKED WITH THE FINAL GRADING PLAN TO VERIFY ACCURACY...
6. DIV C - PART 1, SECTION 1.2.2 OF THE ONTARIO BUILDING CODE 2012...
7. THE DESIGN IS IN ACCORDANCE WITH THE NATIONAL CONCRETE AND MASONRY ASSOCIATION DESIGN MANUAL FOR SEGMENTAL RETAINING WALL...

TYP. MAX. HEIGHT SECTION

1:50



Not for Construction

Design is ISSUED FOR APPROVAL ONLY until Risi Stone Systems has been provided with written verification that a Professional Engineer has been retained by the Contractor to provide General Review of construction for the proposed wall(s) in accordance with the requirements of the Ontario Building Code and PEO Guidelines.

WALL LOCATION PLAN nts

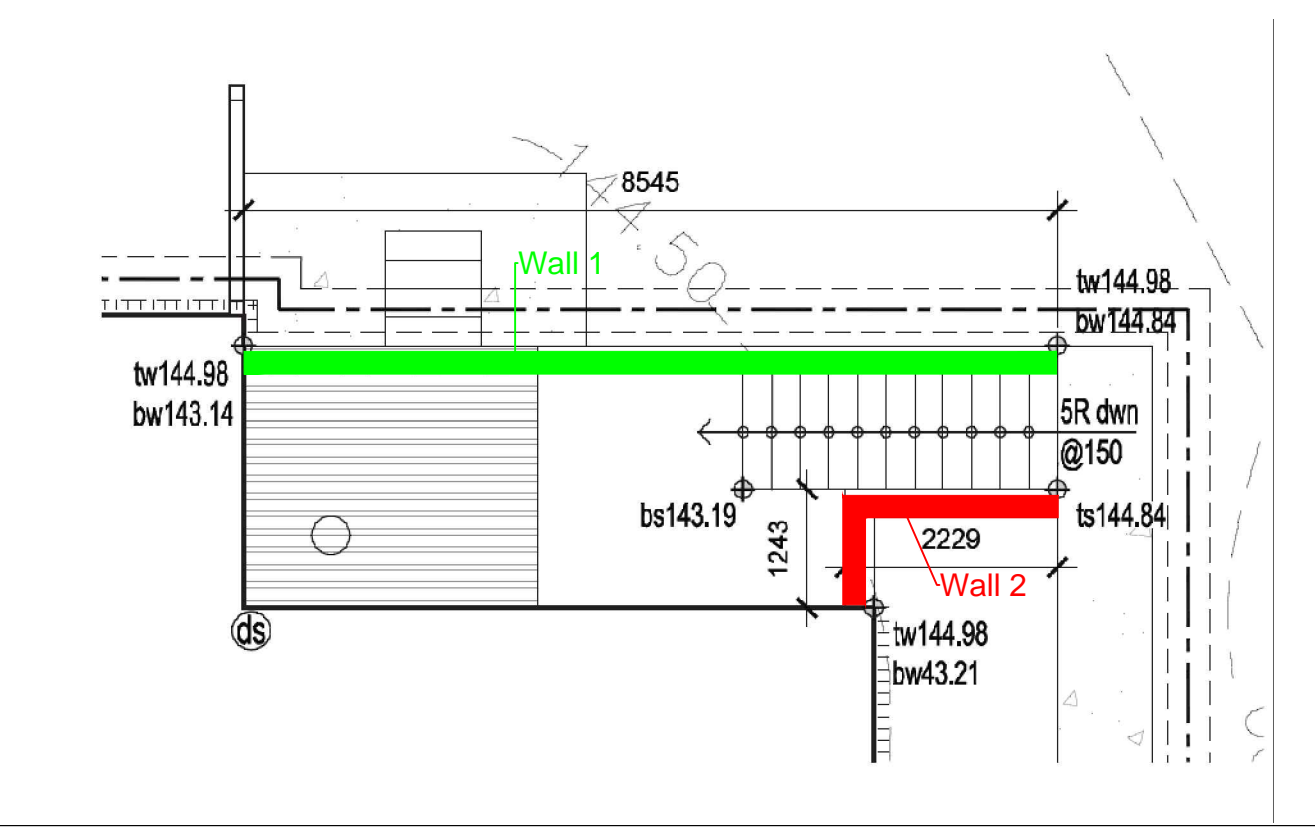


TABLE 1.0 - SOIL ZONES AND ASSUMED PROPERTIES

Table with columns: Soil Region, Reinforced Fill, Retained Fill/Soil, Foundation Soil, Base, and Drainage Fill. Includes soil properties like friction angle, cohesion, and unit weight.

TABLE 3.0 - DRAINAGE PROVISIONS

Table with 3 columns: Potential Water Source, Drainage Measures, and Add. Notes. Details requirements for surface infiltration, lateral underground, and water management during construction.

TABLE 2.0 - DESIGN INFORMATION

Table with 4 columns: Retaining Wall System, Siena Stone, Geogrid Type, and Stratagrid 200. Lists system details and dimensions.

Professional Engineer seal for E.C. Jonasson, License No. 10004993, and design information for Cedarbrook Housing.

Project details for Cedarbrook Housing (Cedarbrook Park Co-op), 435 Markham Rd., Scarborough ON, RSS Project No: 201806026.

Revisions table with columns: No., Date, By, and Revisions.

RisiStone retaining wall systems logo and contact information: 480 Harry Walker Parkway S., Unit 10, Newmarket, Ontario.

Retaining Wall Elevation Views, Sections SHEET RW-1 DWG NO. 1 of 2